



# Welcome to Ingeniux CMS 10

**INGENIUX**  
Content beyond boundaries

# Contents

Meet the New Ingeniux CMS .....	4
What's New on the Frontend .....	5
What's New on the Backend .....	9
Get Ready to Upgrade .....	12

**Meet CMS 10.** The most major update to Ingeniux CMS in years. The newest version of Ingeniux is a content forward platform. Our philosophy is that your content comes first, every time. We've built the Ingeniux content management platform to ensure you can do just that.

We've created new ways to edit content, designed new layouts and added a new layout control with Page Builder. We've supplied you with a mobile-first, multichannel publishing model that ensures your content can be anywhere you need it, in right format and context.

**But most importantly, we are making Ingeniux more powerful and easy to use for your end users.**

# Meet the New Ingeniux CMS

Ingeniux CMS has undergone major changes over the last two releases to provide you, our customers, with the best tools for creating and delivering engaging, innovative digital content experiences.

In addition to a completely new architectural platform built using the latest Microsoft technologies, we have completely redesigned the user experience to support easier creation and management of content.

Our team spent a great deal of time conducting extensive user testing and prototyping to ensure the Ingeniux CMS user interface is intuitive and offers the best features and functionality required to create rich, engaging mobile and web experiences. These changes have been our continued efforts to support our customer's constantly evolving requirements and the continually changing needs of your customers.

## What It Means for You

Moving to the latest version of the Ingeniux CMS ensures you have the tools and capabilities needed to build the next generation of digital experiences. It's important to understand:

- It is a seamless upgrade from older versions of the CMS to the latest version.
- The latest version of the CMS is backward compatible ensuring all the efforts you have spent building your current digital experiences won't break when you upgrade.
- Upgrading gives you all the current functionality you have, plus some important new capabilities to take your website to the next level.
- With the latest version of Ingeniux CMS, you are getting a new platform that provides a bridge to future technology advances and the flexibility to quickly adapt to changes in user expectations.

# What's New on the Frontend

Ingeniux has completely rewritten its platform to create a new modern user experience.

We have spent a lot of time redesigning the front end user interface to make it easier for you to create and manage websites and website content.

With the new UI, there are a few updated features to consider as you view, edit, and manage your content on the front end.

## InContext Editing

With in-content editing, you can view a page as it looks to your users and navigate to the area you wish to edit. A notification will pop-up when you've scrolled over an editable field. Use the toolbar at the top of the page to make your required changes. Simple, quick, and hassle-free.

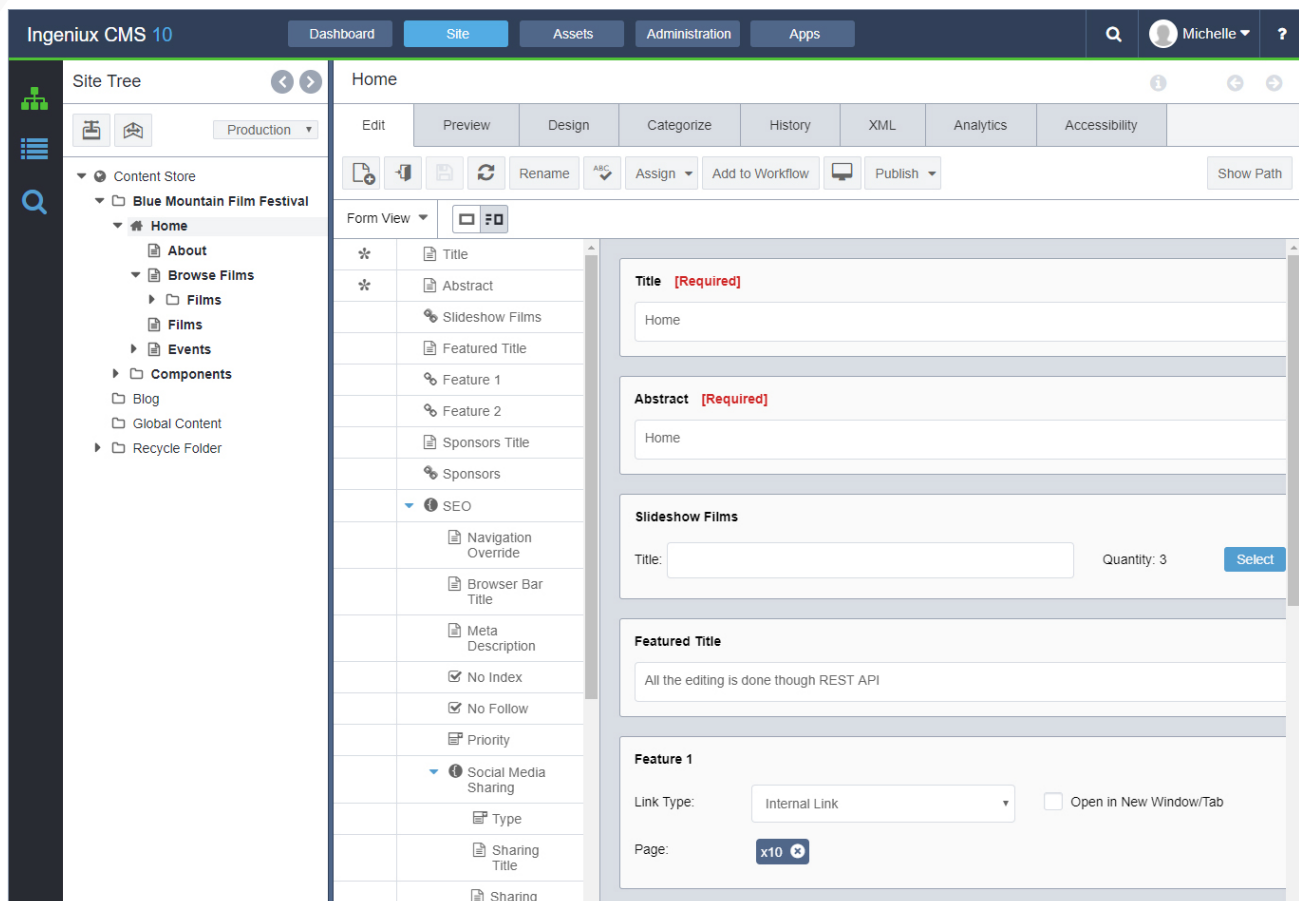




## Traditional Edit Form with Content Navigator

View the tree-like structure for your website and find the page you want to edit. The page will open to show an edit form with

the fields you can edit. You can hide the Content Navigator to give you more room for editing your page.



## Schema View Editor

You can edit website content using the Schema view. This view is typically used by a content editor.

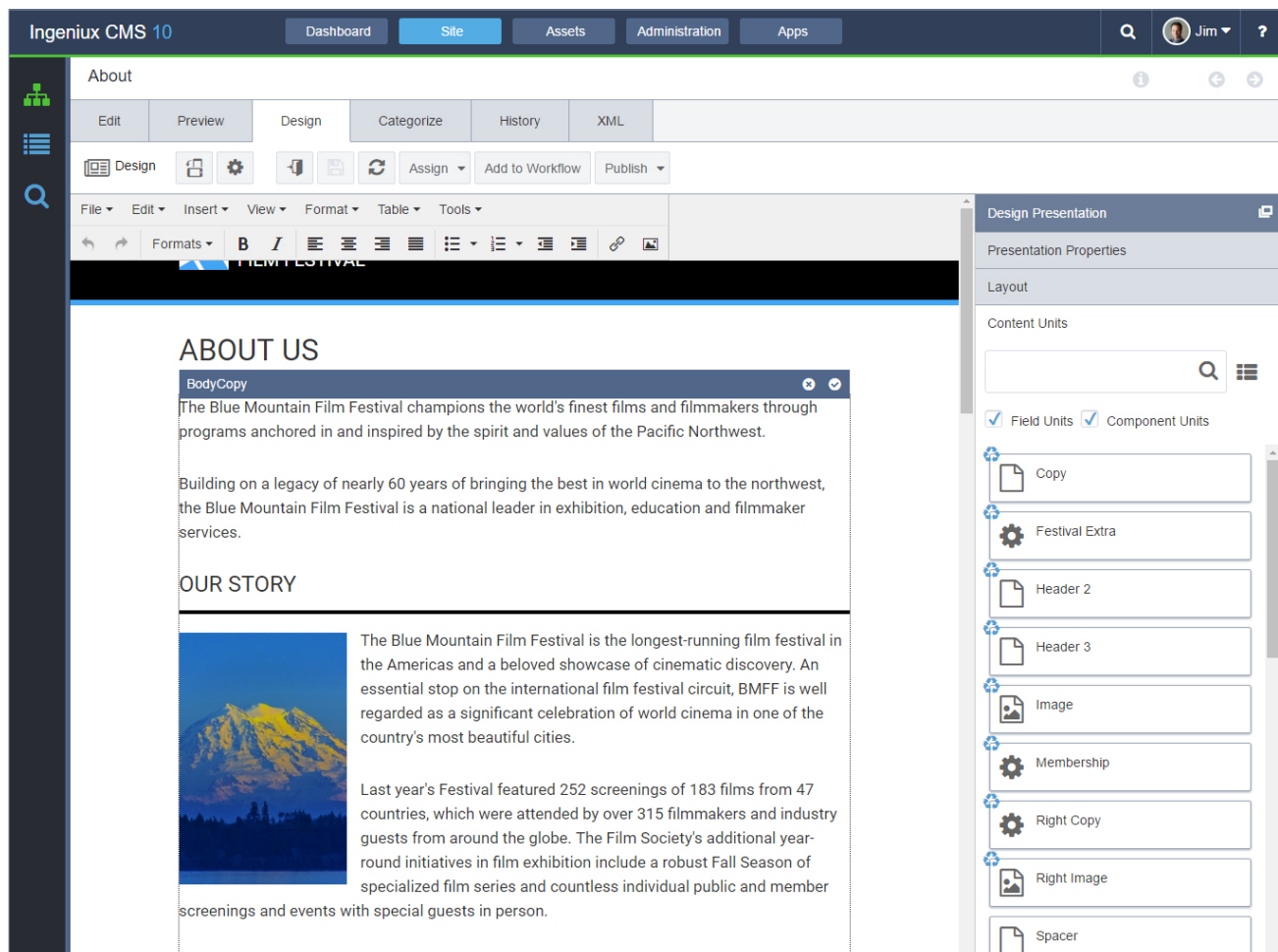
Traditionally, older CMS systems built pages using basic section such as “Title” and “Body Copy.” This resulted in major issues with managing content, especially when considering content re-use across different pages and channels (e.g. Mobile).

The Ingeniux Schema view allows content editors to edit the schema directly and ensure it works in a broader context than one page.

## Enhanced Page Builder

No longer do you need to rely on developers to create templates and pages for your web experience. Page Builder is a visual page and form building application that enables non-technical users to create templates and web pages.

PageBuilder uses the leading responsive design frameworks including Bootstrap and Foundation to ensure your pages work for both desktop and mobile devices. It can also be configured to support other responsive frameworks. A twelve-grid layout system lets you create or modify pages without any coding and drag and drop functionality enables you to add widgets to your design easily.



## A New Digital Asset Manager

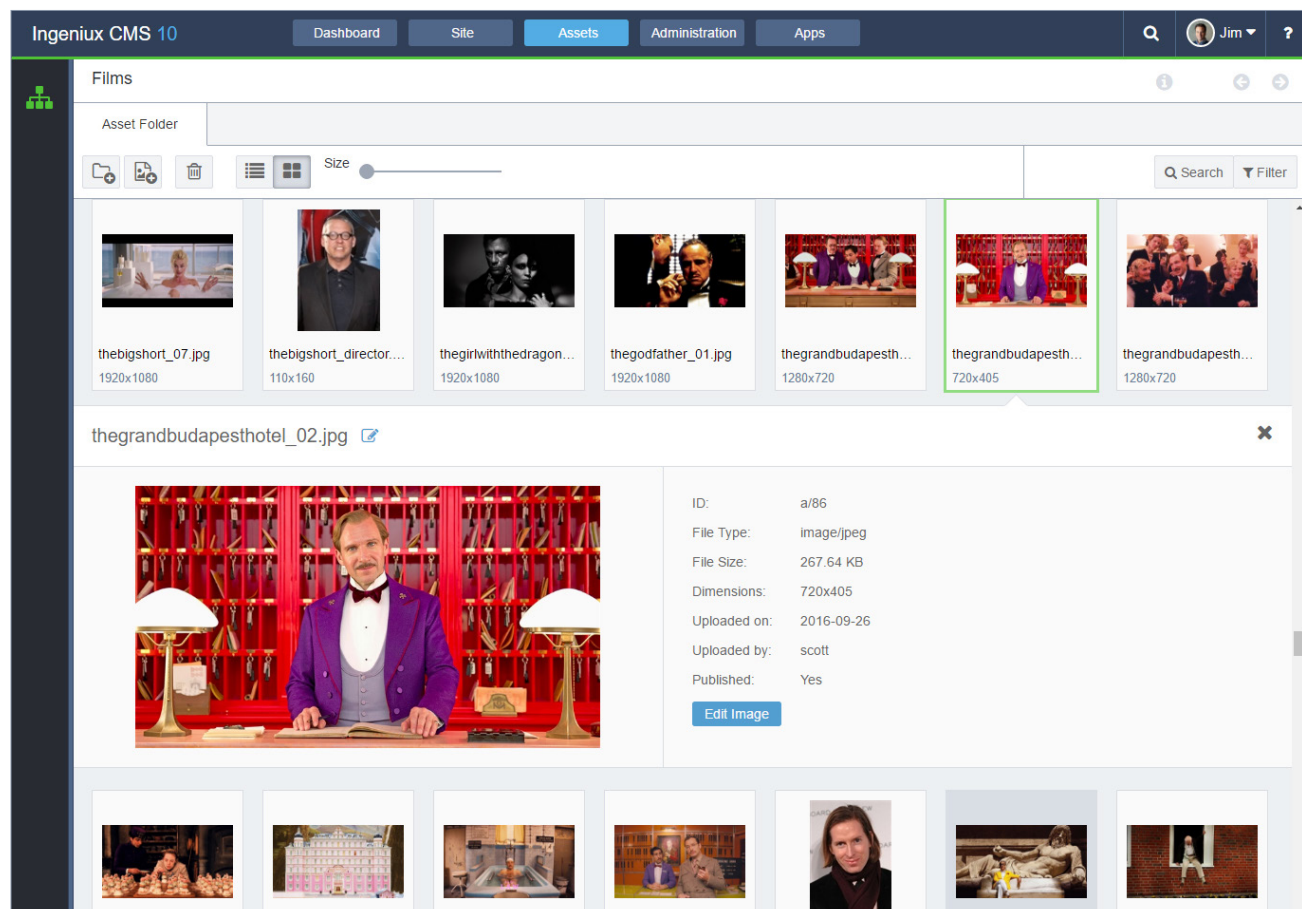
Ingeniux views digital assets, including images, video, and documents, as equal to text-based content and treats these assets similar to how it manages content. As such, it provides enhanced digital asset management capabilities out of the box, alongside text-based content management.

Collaborate on assets directly in the CMS through the Asset Manager, organize assets by type and easily adjust the viewing size of the images folder to find the assets you need. Assets can be assigned workflow

for review, edit, or approval. In the Asset Manager, you can search and browse assets by their associated metadata.

Apply metadata and taxonomy to digital assets to make them available through search and on web pages (including personalized web experiences).

Assets can also be versioned, and different versions can be made available in different areas of the website. When adding an asset, such as an image to a web page, you can edit the image directly within the context of the page.





# What's New on the Backend

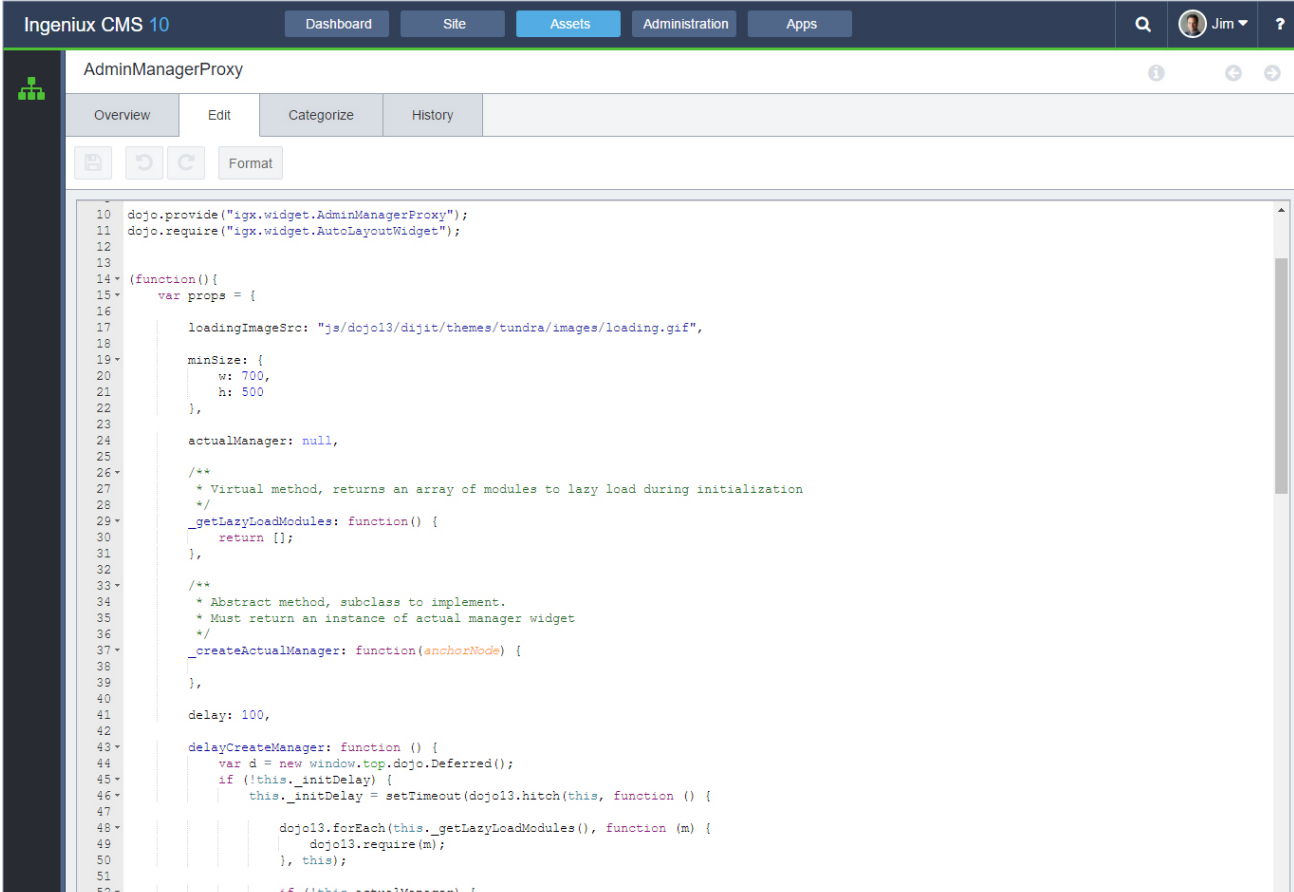
To support the constantly evolving demands for engaging, agile web experiences we have reoriented the CMS application to support more open, rapid and lighter weight development.

## .NET framework / API

The Ingeniux CMS platform is one of the most advanced .NET platforms in the industry. Our CMS is built on the latest ASP.NET MVC technology, including ASP.NET 4.5/4.6, the MVC 5 template framework and the Razor view engine.

Ingeniux provides two core open APIs to extend and integrate the CMS platform and provide content services to external applications.

- The DSS API is a REST-based web service that provides read-only access to



The screenshot displays the Ingeniux CMS 10 interface. At the top, there is a navigation bar with tabs for Dashboard, Site, Assets, Administration, and Apps. The user 'Jim' is logged in. Below the navigation bar, the 'AdminManagerProxy' section is active, showing tabs for Overview, Edit, Categorize, and History. The 'Edit' tab is selected, and a code editor is open, displaying the following JavaScript code:

```
10 dojo.provide("igx.widget.AdminManagerProxy");
11 dojo.require("igx.widget.AutoLayoutWidget");
12
13
14 (function(){
15     var props = {
16
17         loadingImageSrc: "js/dojo13/dijit/themes/tundra/images/loading.gif",
18
19         minSize: {
20             w: 700,
21             h: 500
22         },
23
24         actualManager: null,
25
26         /**
27          * Virtual method, returns an array of modules to lazy load during initialization
28          */
29         _getLazyLoadModules: function() {
30             return [];
31         },
32
33         /**
34          * Abstract method, subclass to implement.
35          * Must return an instance of actual manager widget
36          */
37         _createActualManager: function(anchorNode) {
38
39         },
40
41         delay: 100,
42
43         delayCreateManager: function () {
44             var d = new window.top.dojo.Deferred();
45             if (!this._initDelay) {
46                 this._initDelay = setTimeout(dojo13.hitch(this, function () {
47
48                     dojo13.forEach(this._getLazyLoadModules(), function (m) {
49                         dojo13.require(m);
50                     }, this);
51
52                     if (!this.actualManager) {
```

published CMS content as a data source in your ASP.NET project, whether that's within the CMS or using an external application.

- CMS Web API is one of two API available for the backend content management system. The Web API, available via REST or SOAP, is a set of services that expose Ingeniux CMS functions. It enables easy content management, and along with being the API for the Ingeniux CMS Client, it is also the API that any non .NET customer would use to access CMS functionality.

## Improved Code Management and Versioning Processes

In the latest version of the Ingeniux CMS code is managed as an asset with each file stored and versioned directly within the CMS. A web-based editor enables developers to make code changes quickly.

Developers who need to make small, quick updates to the code can do so without having to open desktop tools such as Visual Studio. Essentially you can develop end-to-end on the browser with no heavy requirements for client-based code editors.

You can also integrate directly with source code control tools like Mercurial if necessary.

## New Content Repository and Database

Ingeniux updated its content repository to a NoSQL database. Designed for content, the Ingeniux NoSQL repository does not require a fixed schema; any content type can be introduced without development or database changes. Content is stored as JSON objects. Files are versioned and managed through a file-locking system that checks pages out for editing.

All content in the repository is indexed and cached in memory, enabling information to be quickly processed and delivered without any performance impact, database IO, or SQL injection risk.

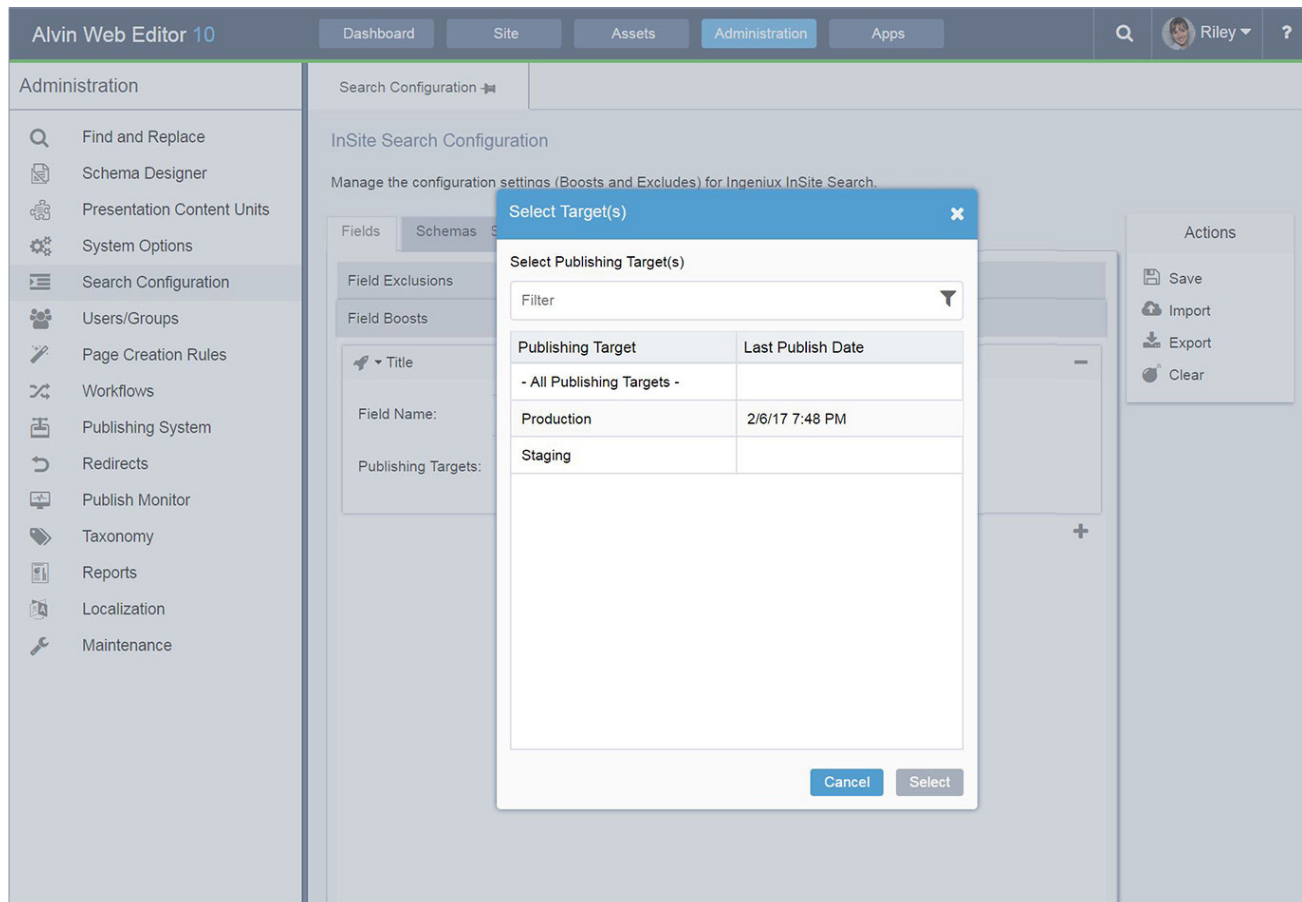
When it comes to scaling, the repository supports millions of topics and documents. Automatic clustering and sharding allow repository clustering without DB administration or development costs. With Ingeniux, the database is embedded, which means you don't require a DBA to support the CMS and there's no performance overhead.

## Improved Search Platform

Ingeniux can integrate with third party search engines, but it also provides a robust built-in search platform called InSite Search.

InSite Search is based on Lucene.NET and is used within the CMS for both website search and backend content management search.

InSite enables guided search architecture-based experiences to deliver relevant, related, and suggested content capabilities.



# Get Ready to Upgrade

If you haven't upgraded to the latest version of the Ingeniux Content Management System, we invite you to connect with our professional services team to discuss a strategy to migrate your implementation. Our team can work with you to define the best upgrade path, identifying any potential issues and how to resolve them.

The sooner you experience all that this latest version has to offer, the sooner your team will be prepared to take your content to the next level and drive even greater engagement with your customers.

**We're excited to help you get started, just give us a call.**

## About Ingeniux

Ingeniux is the leading provider of web content management and digital experience software. We enable organizations to orchestrate the entire customer experience from acquisition through to sales to support and service, across any device, application, or website.

We build content management software with an unparalleled focus on the content itself. The Ingeniux CMS is designed to manage and deliver modern websites, customer support portals, online communities, and other customer touchpoints.

We believe in intelligent “structured” content. We design our software to enable content reuse, enable true mobile and multi-channel content delivery, and insightful content discovery. Our unique content-as-a-service capabilities deliver content into web and mobile applications, and other key channels.

Ingeniux software is available as a fully managed software service or an on-premise application. Ingeniux delivers unparalleled service and support to customers worldwide.

To learn more, visit us at <http://www.ingeniux.com>.

**INGENIUX**

PO Box 21466  
Seattle, WA 98111

[info@ingeniux.com](mailto:info@ingeniux.com)  
877 445 8228